



# EXO & Sellafield

MONITORING NUCLEAR WASTE, LEGACY PONDS

Application Note  
A613



a xylem brand

# Monitoring Nuclear Waste, Legacy Ponds



a xylem brand

YSI Environmental Monitoring Systems  
Application Note A613

**F**ollowing a rigorous assessment period, EXO water quality monitoring sondes from Xylem Analytics are being deployed in what is arguably one of the most hostile environments imaginable - nuclear waste legacy storage ponds at the Sellafield nuclear reprocessing site in Cumbria, UK.

## BACKGROUND

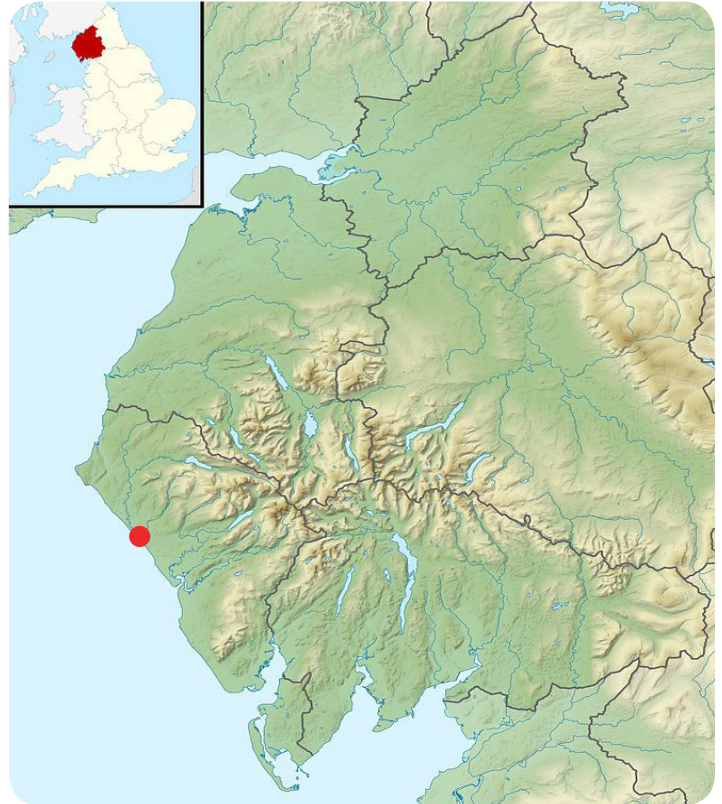
One of the major challenges facing Sellafield Ltd is the safe decommissioning of the First Generation Magnox Storage Pond (FGMSP), a nuclear fuel storage facility that was originally built in the 1950s and 1960s as part of the UK's expanding nuclear programme to receive and store, cool irradiated Magnox fuel prior to reprocessing.

In the 1970s, there was an increase in fuel corrosion and radiation levels. This was due to a lengthy shutdown at the Magnox Reprocessing Plant, combined with increased throughput of fuel related to electricity shortages, and spent fuel was stored in the pond for longer than intended.

Over the years the pond has accumulated significant quantities of waste materials, sludges from corrosion of fuel cladding, skips of fuel, and fuel fragments and other debris which has blown into the pond. Standing above ground, this 5m deep open pond holding some 14,000 cubic metres of contaminated water (approximately the size of two Olympic swimming pools) is considered a decommissioning priority. To assist with future retrievals, a detailed knowledge of the facility's inventory through visual inspection of the pond is needed.

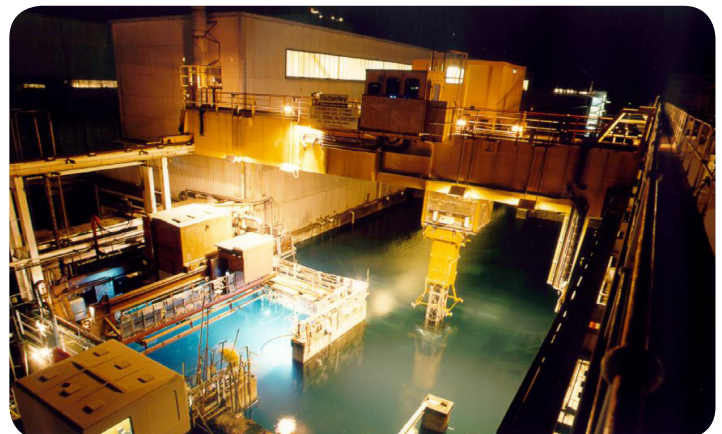
Despite high levels of radioactivity, this open pond appears to intermittently bloom with a range of microorganisms that cloud the water, reducing visibility and hampering inspection and retrieval operations.

Sellafield Ltd is the company responsible for safely delivering decommissioning, reprocessing and nuclear waste management activities on behalf of the Nuclear Decommissioning Authority (NDA), and a project team led by Xavier Poteau has specific responsibility for transferring monitoring technologies to the FGMSP pond.



Sellafield is a nuclear reprocessing site, close to the village of Seascale on the coast of the Irish Sea in Cumbria, England.

Image Credit: Contains Ordnance Survey data  
© Crown copyright and database right



View showing one end (approx. 25%) of the First Generation Magnox Storage Pond (FGMSP) Image supplied courtesy of Sellafield Ltd

Water passing through the pond reaches the Sellafield Ion Exchange Effluent Plant (SIXEP) which removes radioactivity from liquid feeds in a number of plants across the Sellafield site. The plant settles out and filters solids using a carbonation process to neutralise the alkaline pond water and then employs ion exchange to remove radionuclides.

### WHY MONITOR?

Water samples are routinely collected from the pond for laboratory analysis, and analytical data is reported to the Environment Agency and the NDA. In addition to this regulatory requirement, water quality data is also required to inform efficient operation of SIXEP and to ensure that legacy fuel is stored in optimal conditions. For example, the water is caustic dosed to maintain a pH of around 11.5 which reduces the speed of nuclear fuel degradation.

### WATER MONITORING CHALLENGES

As a result of physical restrictions, it has only been possible to take water samples from specific locations around the edge of the pond and, being radioactive, routine samples have to be limited to about 100ml to be within laboratories guidelines. Sampling is also an arduous, time-consuming process; two people have to be involved and each sampler has to wear a pvc suit and facemask, two pairs of pvc waterproof gloves and a pair of Kevlar gloves to ensure that the gloves are not accidentally punctured. The samplers are also only allowed to be close to the pond for a limited time.

Instrumentation might appear to be the obvious solution, but again, there are several challenges, not least of which is that gamma spectrum analysis has to be conducted on a sample in a lab. In addition, electrical instruments often fail in a radioactive environment, so the general assumption is that they will do so, unless proven otherwise. Continuous monitoring probes, similar to those employed by the water industry, are not feasible because of the wiring that would be required. However, portable instruments offer the potential to reduce the volume and frequency of water sampling.



EXO2 Environmental sonde with titanium bulkhead.



Preparation for sampling is an arduous, time-consuming process. Image supplied courtesy of Sellafield Ltd

### TRIALS WITH EXO SONDES

The EXO2 sondes are multiparameter 6-port water quality monitors that have been developed for remote, long-term monitoring applications. Employed globally by regulatory authorities, researchers, industrial companies and those responsible for the protection of water resources, the EXO sondes are the result of many years' of development and feedback from thousands of users from all over the world. As a result, these instruments are lightweight and rugged, with internal batteries and datalogging capability for long-term monitoring applications. The EXO sondes operate on extremely low power and incorporate a range of features that minimise maintenance requirements and avoid biofouling. For example: wet-mateable connectors resist corrosion; components are isolated to prevent short-circuits; welded housings and double o-rings prevent leaks, and high-impact plastic and titanium resists impact damage.

**"...EXO sondes have performed very well 'off the shelf' [in a radioactive environment] which is a sign of good design."**

The 'smart' EXO sensors are easily interchangeable and users are able to select the sensors that best meet their needs. The FGMSp project team, for example, uses sensors for pH, temperature, conductivity, turbidity, fDOM (Fluorescent Dissolved Organic Matter - a surrogate for Coloured DOM), Blue-green Algae and Chlorophyll.

Initially, the FGMSp project team trialled an extended deployment version of the YSI 6600 multiparameter water quality monitoring sonde - a predecessor of the EXO. "This enabled us to assess the quality of the YSI sensors and demonstrate that they were able to operate well in a radioactive environment," comments Technical Specialist Marcus Coupe, adding: "The launch of the EXO was of great interest to us because, with Bluetooth communications and smart sensors that retain their calibration data, the EXO offered an opportunity to dramatically reduce time spent at the pond."

**"The launch of the EXO was of great interest to us because...[it] offered an opportunity to dramatically reduce time spent at the pond."**

"The snap-on probes are calibrated in the laboratory and can then be quickly and simply swapped with those that have been deployed on an EXO sonde. This means that the main part of the sonde can be left onsite while the sensors are quickly swapped, and the Bluetooth comms enable us to collect 18,600 sets of data in less than 20 minutes."

Commenting further on the success of the EXO trials, Xavier Poteau says: "It has been a common experience in the nuclear industry to have to apply significant adaptations to electrical equipment, so that it is able to function correctly in a radioactive environment, and this can incur a heavy cost and time penalty. However, the EXO sondes have performed very well 'off the shelf' which is a sign of good design."

As part of their work with the EXO sondes, the FGMSp project team has deployed an EXO sonde with a submersible remotely operated vehicle (ROV). This enabled the team to monitor water quality at previously unachievable locations. "Any loss of visibility in the pond can potentially cause a significant risk to operations within the legacy ponds, as well as potentially slowing down future retrievals, so the ability to deploy an EXO with a ROV offers a valuable insight into understanding the challenge, and moves us from single point sampling to a more 3D-like data stream," adds Marcus Coupe.

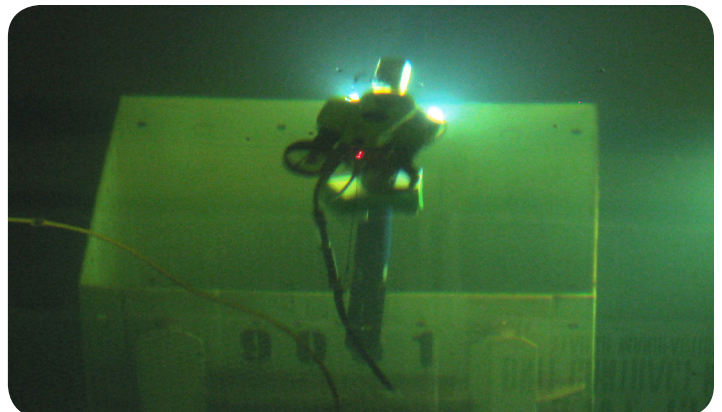
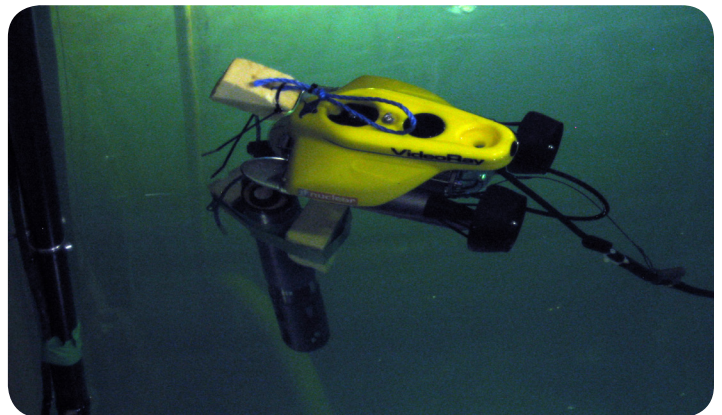
## LOOKING FORWARD

Neill Cornwell from Xylem Analytics has been involved with the trials at Sellafield from the start. He says: "A lot of hard work has gone into the process of demonstrating EXO's suitability for deployment in the nuclear sector; not only has the equipment had to perform well in challenging conditions, but we have also had to demonstrate a high level of technical and service support."

"Naturally, we are very pleased that the sondes have performed so well, and further instruments are now being deployed in other applications at the Sellafield site. For example, a slimmer version of the EXO, the EXO1, is being used to monitor the effluent distribution tanks because the only access is via narrow pipes and the EXO1 is ideal because its outer diameter is just 1.85 inches."

The data from the FGMSp sondes compare favourably with the results of laboratory analysis, so Xavier Poteau believes "a high level of confidence is being established in the EXO data and this means that we will be able to reduce the amount of sampling that we undertake, which will save a great deal of time, hassle and money."

"I strongly believe that our experience could be beneficial to the wider audience as well as the nuclear industry."



EXO2 deployed with a ROV in a radioactive environment.  
Image supplied courtesy of Sellafield Ltd

**For further information, please contact:**

Xylem Analytics UK Limited  
2 Focal Point, Lacerta Court  
Letchworth SG6 1FJ  
United Kingdom

Website: [www.xylemanalytics.co.uk](http://www.xylemanalytics.co.uk)

Email: [salesuk@xylem.com](mailto:salesuk@xylem.com)

Telephone: (+44) 1462 673581

Fax: (+44) 1462 673582

Xylem Analytics UK manufactures environmental monitoring instruments and systems. Formerly known as YSI, the group is a market leader with a reputation for high levels of accuracy and reliability. The company's water quality measuring instruments are designed for both laboratory and field use. In addition to bench top and hand-held instruments, Xylem Analytics also builds monitoring systems and wireless networks that are able to operate in remote locations and challenging environments. The company's water quality monitoring sondes can be fitted with a wide variety of sensors including dissolved oxygen, PH, temperature, turbidity, conductivity, salinity, ORP, chlorophyll, open-channel flow, vented level, ammonia, chloride, rhodamine, depth photo synthetically active radiation.

Xylem brands represented include; YSI, SonTek, Aanderaa, MJK and WTW.



YSI Inc. | 1725 Brannum Ln | Yellow Springs, OH 45387

Tel +1.937.767.7241 | 800.897.4151 | [environmental@ysi.com](mailto:environmental@ysi.com)

© 2013 Xylem, Inc. All rights reserved.  
EXO is a trademark of Xylem Inc. or one of its subsidiaries. A613-01 0414

**xylem**  
Let's Solve Water